

Decals

Observe! The decals are not in their natural sizes.



101



102



103



104



105



106



107



108



109



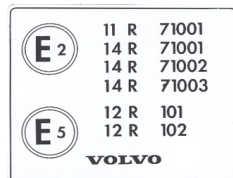
110



111



112



113



114



115



116



117



118



119



120



121



122



123



124



125



126



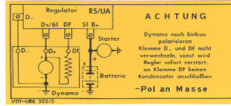
127



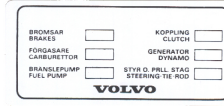
157

OBSERVERA !
 Denna vagn har en bakvinkel med differentialsladda i Anti-Sladd. Vid en rund till uppfyllt bakvinkel varken för hand eller med motorn. Vagnen kan i så fall glida av domkraften eller bocken och falla ned.
Obs! Nivelleringsstaket används.
AB Volvo, Göteborg

158



159



160

RECOMMENDED OIL INJECTION PRESSURES
 NEW YORK (U.S.) VOLVO CAR SECT.

MODEL	YEAR	INJECTION PRESSURE (PSI)	INJECTION PRESSURE (BAR)
742-744	920	23.5	1.6
243	1090	23.5	1.6
104	920	23.5	1.6
104	920	23.5	1.6

SEE OWNER'S MANUAL FOR FURTHER DETAILS.

161

MFD. BY VOLVO COPENHAGEN SWEDEN.

GVW	GVWR FRONT	2020 LB
4,200 LB	GVWR REAR	2,310 LB

THIS VEHICLE CONFORMS TO ALL APPLICABLE FEDERAL MOTOR VEHICLE SAFETY STANDARDS IN EFFECT ON THE DATE OF MANUFACTURE SHOWN ABOVE.
 VEH IDENT NO TYPE PASSENGER CAR

162



163

SPARVÄRDSREKOMMENDATIONER
 Maximum permitted road speeds

Drivlag för	Varianter 900 och 920
400 mil/640 km	mil/1000-2000 km

1st gear	2nd gear	3rd gear	4th gear	5th gear
20 mph / 32 km/h	30 mph / 48 km/h	40 mph / 64 km/h	50 mph / 80 km/h	60 mph / 96 km/h

Avoid driving at low speeds in 5th gear.

164



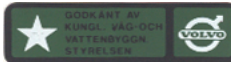
165

MILEAGE WHEN INSTALLED
 EQUIPPED WITH
CHAMPION
 SPARK PLUGS
 PLUG TYPE

166

IMPORTANT
 WHEN RESETTING TRIP COUNTERS
 ROTATE KNOB CLOCKWISE
 UNTIL ALL COUNTERS ARE AT ZERO

167



168

UPPLYSNINGAR OM AVGASKONTROL
 TYPBETEKEN: AB VOLVO GÖTEBORGS

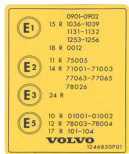
MOTORKÄNDEL	827E	CYLSINDRENING: 2644 cm ³
TOMKÄNDEL	800	2 50 mm
VÄNDEL	10 1/2 2 1/2 vid 700 - 800 rpm	VAKUUM: 50 cmHg

DETA FORDON ÖVERENSÄMMER MED FÖRESKRIFTERNA I DEN SVENSKA BILAVGASKONTROLLEN FÖR FORDON AV 976 BILER SVENSK ÅRS-MODEL VOLVO DETNR 1246843

169

VEHICLE EMISSION CONTROL INFORMATION
 MANUFACTURER: AB VOLVO, SWEDEN
 ENGINE: VOLVO 8 20 E
 ENGINE DISPL: 121 CU IN.
 IDLE SPEED: 900 RPM
 IGNITION TIMING: 10° BTDC AT 800 RPM
 IDE CO 2'S (INCL. ADJUSTABLE) VACUUM NOT CONNECTED
 AT TRANSMISSION POSITION: NEUTRAL
 THIS VEHICLE CONFORMS TO U.S. DEPT. OF REW AND CALIFORNIA STATE REGULATIONS APPLICABLE TO 1971 MODEL YEAR NEW MOTOR VEHICLES.

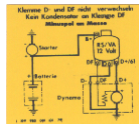
170



171

Jag GÅR hellre än jag kör japanskt

172



173



174



175

Signalhorn
 Sidorljus
 Bakljus
 Brakljus
 Bakvinkelbelysning
 Känslare
 Bildskärm

176



177



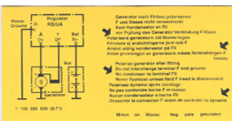
178



179



180



181



186



187



188



189



190



667698



191



192



193



194



195